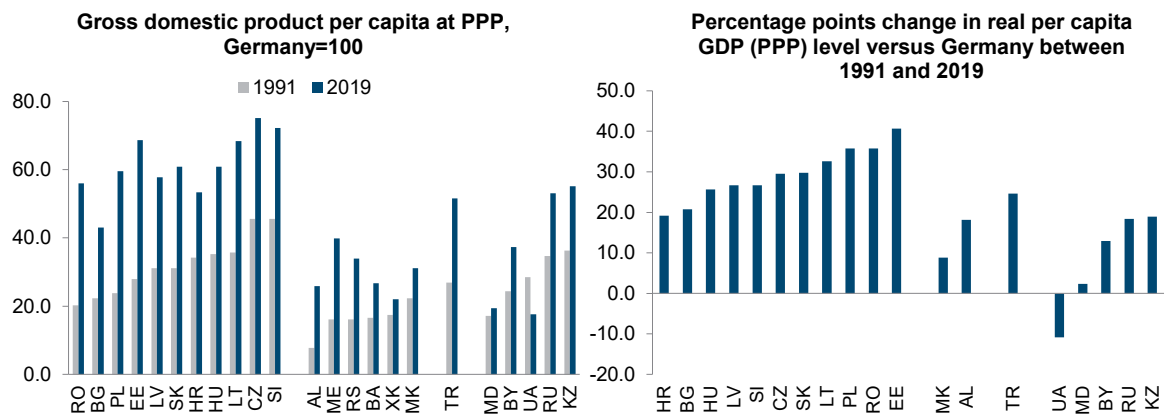


## 5. CESEE monitors

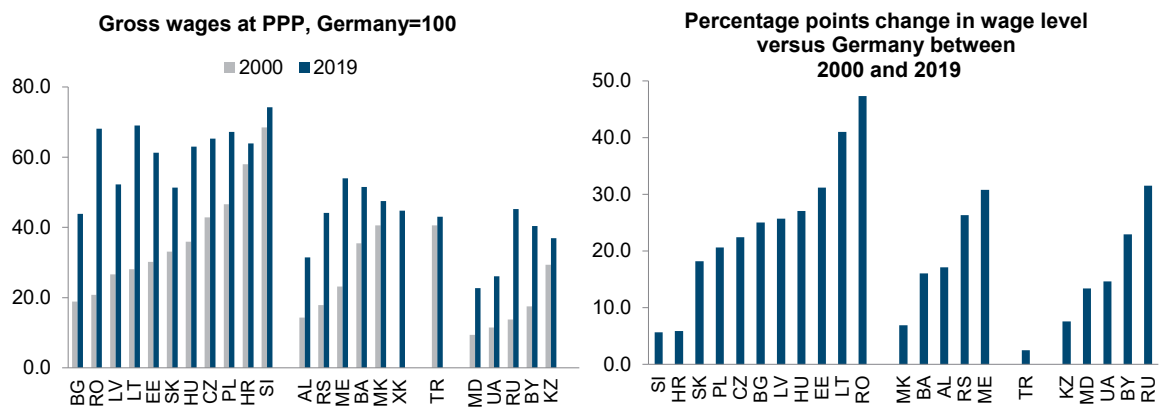
### 5.1. CONVERGENCE MONITOR

Figure 5.1 / GDP per capita at PPP convergence against Germany



Note: Data 1990 for BA and XK refer to 2000, for ME and RS to 1995.

Source: wiiw Annual Database incorporating national statistics and Eurostat.



Note: Gross wages are based on administrative data. In 2019 Lithuanian wages include employers' social security contributions. Turkey: data 2000 refer to 2003.

Source: wiiw Annual Database incorporating national statistics and Eurostat.

**Table 5.1 / CESEE GDP per capita and gross wages per employee at PPP, 2019**

	BG	CZ	EE	HR	HU	LT	LV	PL	RO	SI	SK	EU- CEE11
GDP per capita	16,600	29,000	26,500	20,600	23,500	26,400	22,200	22,900	21,600	27,900	23,500	23,100
Gross wages	13,849	22,564	21,197	22,085	21,783	23,874	18,072	23,244	23,559	25,643	17,750	21,949

	AL	BA	BY	KZ	MD	ME	MK	RS	RU	TR	UA	XK	non- EU12
GDP per capita	10,000	10,300	14,400	21,300	7,500	15,400	12,000	13,100	20,500	19,900	6,800	8,500	17,800
Gross wages	10,865	17,817	13,974	12,778	7,847	18,651	16,412	15,265	15,646	14,883	9,017	15,484	14,372

Note: Gross wages are based on administrative data. Lithuanian wages include employers' social security contributions.  
Source: wiiw Annual Database incorporating national statistics and Eurostat.

**Table 5.2 / CESEE GDP per capita and gross wages per employee EUR at ER, 2019**

	BG	CZ	EE	HR	HU	LT	LV	PL	RO	SI	SK	EU- CEE11
GDP per capita	8,600	20,500	20,900	13,200	14,600	17,300	15,900	13,600	11,400	22,900	17,300	14,300
Gross wages	7,814	15,941	16,680	14,181	13,553	15,600	12,960	13,766	12,450	21,046	13,080	13,439

	AL	BA	BY	KZ	MD	ME	MK	RS	RU	TR	UA	XK	non- EU12
GDP per capita	4,800	5,000	5,900	8,700	4,100	7,700	5,300	6,600	10,300	8,200	3,300	4,000	8,300
Gross wages	5,229	8,720	5,758	5,195	4,270	9,276	7,277	7,656	7,845	6,134	4,351	7,200	6,784

Note: Gross wages are based on administrative data. Romanian wages include employers' social security contributions.  
Source: wiiw Annual Database incorporating national statistics and Eurostat.