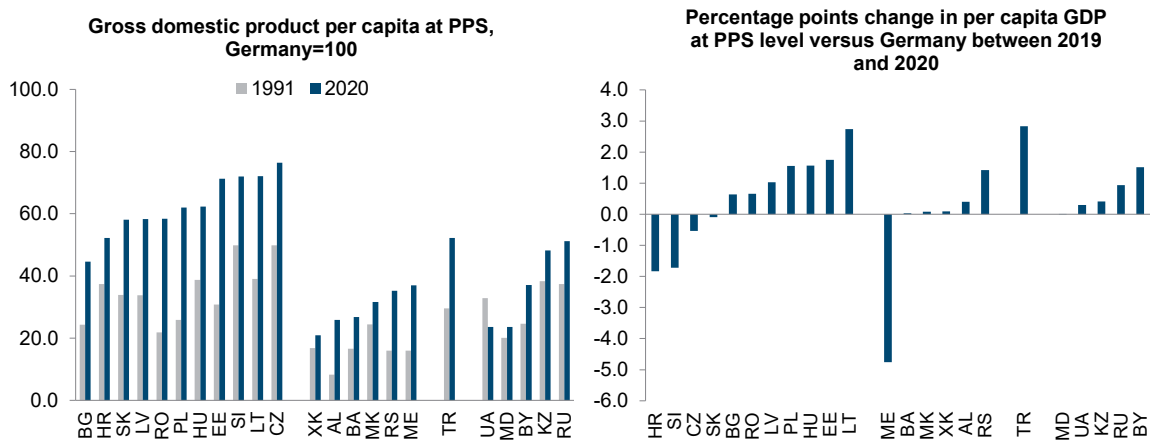
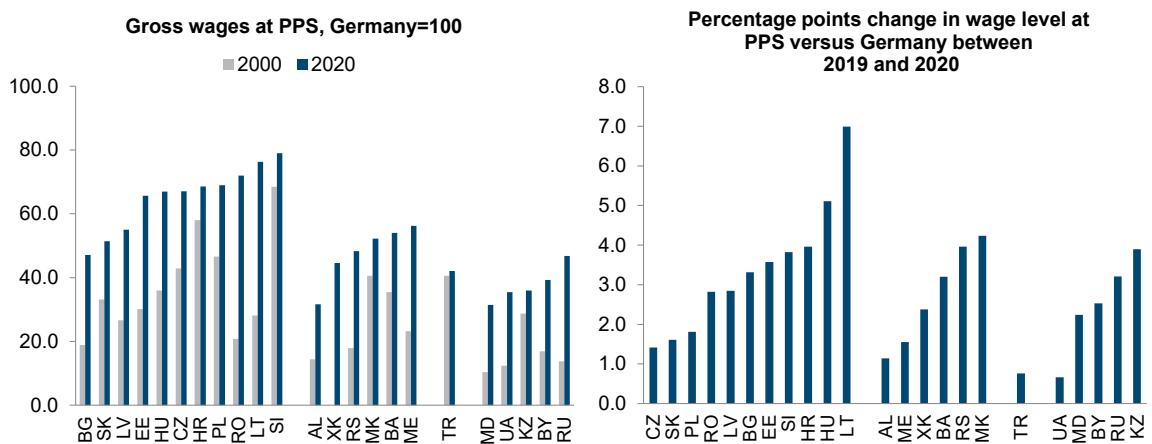


3. Convergence monitor

Figure 3.1 / GDP per capita at PPS convergence against Germany



Note: Data 1991 for BA and XK refer to 2000, for ME and RS to 1995.
 Source: wiiw Annual Database incorporating national statistics and Eurostat.



Note: Gross wages are based on administrative data. From 2019 Lithuanian and Romanian wages include employers' social security contributions. In 2020 Croatian wages based on FTE employees. Turkey: data 2000 refer to 2003, wiiw estimate from 2019.
 Source: wiiw Annual Database incorporating national statistics and Eurostat.

Table 3.1 / CESEE GDP per capita and gross wages per employee at PPS, 2020

	BG	CZ	EE	HR	HU	LT	LV	PL	RO	SI	SK	EU- CEE
GDP per capita	16,200	27,750	25,890	18,970	22,620	26,170	21,170	22,510	21,220	26,130	21,110	22,390
Gross wages	15,755	22,453	22,003	22,947	22,439	25,561	18,436	23,104	24,104	26,443	17,206	22,353

	AL	BA	BY	KZ	MD	ME	MK	RS	RU	TR	UA	XK	non- EU
GDP per capita	9,390	9,740	13,460	17,510	8,580	13,440	11,490	12,810	18,600	18,960	8,570	7,580	16,750
Gross wages	10,606	18,073	13,136	12,032	10,511	18,818	17,479	16,176	15,670	14,094	11,860	14,942	14,533

Note: Gross wages are based on administrative data. Lithuanian wages include employers' social security contributions.

Turkey wages: wiiw estimate.

Source: wiiw Annual Database incorporating national statistics and Eurostat.

Table 3.2 / CESEE GDP per capita and gross wages per employee at EUR, 2020

	BG	CZ	EE	HR	HU	LT	LV	PL	RO	SI	SK	EU- CEE
GDP per capita	8,750	19,960	20,440	12,130	13,900	17,460	15,430	13,600	11,270	22,010	16,680	14,000
Gross wages	8,509	16,153	17,376	14,670	13,789	17,054	13,440	13,957	12,803	22,274	13,596	13,917

	AL	BA	BY	KZ	MD	ME	MK	RS	RU	TR	UA	XK	non- EU
GDP per capita	4,620	4,900	5,520	7,930	4,020	6,710	5,190	6,710	8,830	7,520	3,260	3,840	7,400
Gross wages	5,215	9,055	5,382	5,449	4,926	9,396	7,893	8,469	7,440	5,587	4,518	7,560	6,520

Note: Gross wages are based on administrative data. Lithuanian wages include employers' social security contributions.

Turkey wages: wiiw estimate.

Source: wiiw Annual Database incorporating national statistics and Eurostat.